

# Калибраторы ВХ-150, ВХ-350, ВХС-15, ВХЛ-500Р, ДТ-925, SC-05

## Технические характеристики

По вопросам продаж и поддержки обращайтесь:

Алматы (727)345-47-04  
Ангарск (3955)60-70-56  
Архангельск (8182)63-90-72  
Астрахань (8512)99-46-04  
Барнаул (3852)73-04-60  
Белгород (4722)40-23-64  
Благовещенск (4162)22-76-07  
Брянск (4832)59-03-52  
Владивосток (423)249-28-31  
Владикавказ (8672)28-90-48  
Владимир (4922)49-43-18  
Волгоград (844)278-03-48  
Вологда (8172)26-41-59  
Воронеж (473)204-51-73  
Екатеринбург (343)384-55-89

Иваново (4932)77-34-06  
Ижевск (3412)26-03-58  
Иркутск (395)279-98-46  
Казань (843)206-01-48  
Калининград (4012)72-03-81  
Калуга (4842)92-23-67  
Кемерово (3842)65-04-62  
Киров (8332)68-02-04  
Коломна (4966)23-41-49  
Кострома (4942)77-07-48  
Краснодар (861)203-40-90  
Красноярск (391)204-63-61  
Курск (4712)77-13-04  
Курган (3522)50-90-47  
Липецк (4742)52-20-81

Магнитогорск (3519)55-03-13  
Москва (495)268-04-70  
Мурманск (8152)59-64-93  
Набережные Челны (8552)20-53-41  
Нижний Новгород (831)429-08-12  
Новокузнецк (3843)20-46-81  
Ноябрьск (3496)41-32-12  
Новосибирск (383)227-86-73  
Омск (3812)21-46-40  
Орел (4862)44-53-42  
Оренбург (3532)37-68-04  
Пенза (8412)22-31-16  
Петрозаводск (8142)55-98-37  
Псков (8112)59-10-37  
Пермь (342)205-81-47

Ростов-на-Дону (863)308-18-15  
Рязань (4912)46-61-64  
Самара (846)206-03-16  
Санкт-Петербург (812)309-46-40  
Саратов (845)249-38-78  
Севастополь (8692)22-31-93  
Саранск (8342)22-96-24  
Симферополь (3652)67-13-56  
Смоленск (4812)29-41-54  
Сочи (862)225-72-31  
Ставрополь (8652)20-65-13  
Сургут (3462)77-98-35  
Сыктывкар (8212)25-95-17  
Тамбов (4752)50-40-97  
Тверь (4822)63-31-35

Тольятти (8482)63-91-07  
Томск (3822)98-41-53  
Тула (4872)33-79-87  
Тюмень (3452)66-21-18  
Ульяновск (8422)24-23-59  
Улан-Удэ (3012)59-97-51  
Уфа (347)229-48-12  
Хабаровск (4212)92-98-04  
Чебоксары (8352)28-53-07  
Челябинск (351)202-03-61  
Череповец (8202)49-02-64  
Чита (3022)38-34-83  
Якутск (4112)23-90-97  
Ярославль (4852)69-52-93

Россия +7(495)268-04-70

Казахстан +7(727)345-47-04

Беларусь +375-257-127-884

Узбекистан +998(71)205-18-59

Киргизия +996(312)96-26-47

эл.почта: [mce@nt-rt.ru](mailto:mce@nt-rt.ru) || сайт: <https://cem.nt-rt.ru/>

# BX-350/500/BXC-15

## Portable IR Calibrators



BX-350/BX-500/BXC-15 portable IR calibrators are used for calibrating long distance Infrared Thermometer, which are designed as handheld and small calibrators.

Specifications			
	BX-350	BX-500	BXC-15
Temperature Range	50°C ~ 350°C (122°F ~ 662°F)	50°C ~ 500°C (122°F ~ 932°F)	-15°C ~ 120°C (5°F ~ 248°F)
Accuracy	±0.5°C @ 100°C (±1.0°F @ 212°F)	±0.5°C @ 100°C (±1.0°F @ 212°F)	±0.40°C at -15 to 0°C ±0.50°C at 0 to 100°C ±0.55°C at 100 to 120°C
	±1.2°C @ 350°C (±2.4°F @ 662°F)	±1.8°C @ 500°C (±3.6°F @ 932°F)	
Stability	±0.1°C @ 100°C (±0.2°F @ 212°F)	±0.1°C @ 100°C (±0.2°F @ 212°F)	±0.1°C @ 100°C (±0.2°F @ 212°F)
	±0.2°C @ 350°C (±0.4°F @ 662°F)	±0.3°C @ 500°C (±0.6°F @ 932°F)	
Target size	2.25" (57mm)	2.25" (57mm)	3.26" (83x83mm)
Target Emissivity	0.95	0.95	0.95
Resolution	0.1°C/°F	0.1°C/°F	0.01°C/°F up to 300°; 0.1°C/°F over 300°;
Heating Time	30 minutes to max	40 minutes to max	15 min: 120°C to 23°C 15 min: 23°C to -15°C
Cooling Time	30 minutes max to 100°C	45 minutes max to 100°C	15 min: 120°C to 23°C 20 min: 23°C to -15°C
			TFT Color display with capacitive touch screen
			Ethernet network interface
Power	230 VAC (±10%), 1.5 A; or 110V AC, 3A		

The BXC-15 reaches temperatures from -15 °C to 120 °C



Model BXC-15



EMC  
EN: 61326

Whether you're using in-line or handheld infrared pyrometers, you need a high performance calibration standard to verify accuracy. Portable IR Calibrator provides a stable blackbody target for calibrating non-contact IR thermometers up to 500°C (BX-500).

The portable IR calibrator features a large temperature controlled blackbody target with a diameter of 2.25" (57 mm), which offers a wide field of view area for optical variations in IR thermometers. With an emissivity of 0.95, the isothermal target can be controlled in set-point increments of 0.1° from 50°C to 500°C (BX-500)

For even higher precision, a contact calibration well is located directly behind the blackbody surface. Using an optional digital RTD thermometer and calibrated secondary probe, accuracies of ±0.1°C can be achieved.



**Size(HxWxD):** 180mm x 114mm x 233mm

**Weight:** 2682g

**Accessories:** Carton box, AC power cable.



Model BX-350/500

## BX-150 Dry-Well Temperature Calibrator

The new heat source to check your thermometer's accuracy up to 300°C/572°F. Simply set the heat source to the desired test point, insert the test probe into the best fitting well, and get a verification of the performance. It's that easy!

Specifications	
Range	33°C to 300°C (91.4°F to 572°F)
Resolution	0.1°C/F
Accuracy	±0.5°C (33 to 199°C) & ± 1°C (200 to 300°C) ±0.9°F (91.4 to 390.2°F) & ± 1°F (392 to 572°F)
Stability	±0.5°C
Heating Time	ambient to 300°C (572°F) after 10 minutes
Cooling Time	300°C (572°F) to 100°C (212°F) after 10 minutes
Stabilization	5 minutes
Well Depth	4" (100mm)
Power	230/115 volts



EMC  
EN: 61326



Model BX-150

**Size(HxWxD):** 180mm x 114mm x 233mm    **Accessories:** Box, AC power cable.

**Weight:** 2200g

# Precision Infrared Calibrator

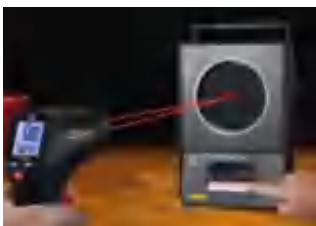


Model BXL-500P

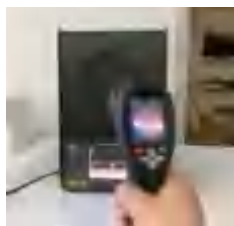
New accredited performance  
for point-and-shoot calibrations  
(BXL-500P)

## Accuracy and traceability for infrared measurements

- Easy to increase your IR temperature measurement accuracy
- Calibrated radiometrically for meaningful, consistent results.
- Accurate, reliable performance from 35 °C to 500 °C
- Large target size of 152 mm (6 in) is required for calibrating most thermometers.
- Intuitive, easy-to-read display that indicates when temperature is stable.
- Ethernet network interface



TFT Color display with capacitive touch screen



## Specifications

Temperature Range	35°C ~ 500°C/ (95°F ~ 932°F)
Accuracy	±0.5°C @ 100°C/ (±1.0°F @ 212°F)
	±1.8°C @ 500°C/ (±3.6°F @ 932°F)
Stability	±0.1°C @ 100°C/ (±0.2°F @ 212°F)
	±0.3°C @ 500°C/ (±0.6°F @ 932°F)
Target size	6" (152.4mm)
Target Emissivity	0.95
Resolution	0.01°C/°F up to 300°; 0.1°C/°F over 300°;
Heating Time	30 minutes to max
Cooling Time	40 minutes max to 100°C
Power	230 VAC (±10%), 1.5 A; or 110V AC, 3A

**Size(HxWxD):** 180mm x 114mm x 233mm

**Weight:** 2682g

**Accessories:** Carton box, AC power cable.

## DT-925 Voltage & Current Calibrator / DMM with Voltage & Current Calibrator

Model 925



EMC & LVD  
EN: 61326  
EN: 61010-1  
EN: 61010-02-032  
EN: 61010-02-033

925 Voltage/Current calibrator is a portable instrument for calibrating process devices and measuring process signals. It brings you into the field of precision measurement.

- Adjustable 0-24mA current source.
- Adjustable -199.9mV to +199.9mV DCA source.
- Current calibrator drives loads up to 500 ohms.
- The instrument measures a two-wire current loop.

### Specifications ( standard source)

Function	Range	Display Resolution	Accuracy
Current source	0-19.99mA	0.01mA	±(0.25%FS+1d)
	0-24mA	0.1mA	±(0.5%FS+1d)
DC mV source	-199.9mV to	0.1mV	±(0.25%FS+1d)
	+199.9mV		

### Specifications (measurement)

Range	0-19.99mA	0.01mA	±(0.25%FS+1d)
	0-24mA	0.1mA	±(0.5%FS+1d)

Size(HxWxD): 150mm x 70mm x 48mm

Weight: 236g

Accessories:

Test leads, 9V battery and gift box with carrying case.

**CEM**

**SC-05**

**Sound Level Calibrator**

### Features

94dB and 114dB Sound Calibration at 1kHz

Accurate and simple to use

Fits 1/2" diameter microphone

### Specifications

Output Sound Pressure Levels	114dB and 94dB re 20 uPa under reference conditions.
Output Frequency	1000Hz, ±4%
Reference Temperature Conditions	>23°C (73°F)
Atmospheric pressure	>1013 mbar (760mm of Hg)
Relative humidity	>65%RH
Accuracy of Sound Pressure Level	Under stated reference environment conditions ±0.5dB



Model SC-05



Size(HxWxD): 120mm x 50mm x 42mm

Weight: 278g

Accessories:

9V battery, Carrying case, 1/2" Microphone Adaptor (optional) and Clamshell.

## По вопросам продаж и поддержки обращайтесь:

Алматы (727)345-47-04  
Ангарск (3955)60-70-56  
Архангельск (8182)63-90-72  
Астрахань (8512)99-46-04  
Барнаул (3852)73-04-60  
Белгород (4722)40-23-64  
Благовещенск (4162)22-76-07  
Брянск (4832)59-03-52  
Владивосток (423)249-28-31  
Владикавказ (8672)28-90-48  
Владимир (4922)49-43-18  
Волгоград (844)278-03-48  
Вологда (8172)26-41-59  
Воронеж (473)204-51-73  
Екатеринбург (343)384-55-89

Иваново (4932)77-34-06  
Ижевск (3412)26-03-58  
Иркутск (395)279-98-46  
Казань (843)206-01-48  
Калининград (4012)72-03-81  
Калуга (4842)92-23-67  
Кемерово (3842)65-04-62  
Киров (8332)68-02-04  
Коломна (4966)23-41-49  
Кострома (4942)77-07-48  
Краснодар (861)203-40-90  
Красноярск (391)204-63-61  
Курск (4712)77-13-04  
Курган (3522)50-90-47  
Липецк (4742)52-20-81

Магнитогорск (3519)55-03-13  
Москва (495)268-04-70  
Мурманск (8152)59-64-93  
Набережные Челны (8552)20-53-41  
Нижний Новгород (831)429-08-12  
Новокузнецк (3843)20-46-81  
Ноябрьск (3496)41-32-12  
Новосибирск (383)227-86-73  
Омск (3812)21-46-40  
Орел (4862)44-53-42  
Оренбург (3532)37-68-04  
Пенза (8412)22-31-16  
Петрозаводск (8142)55-98-37  
Псков (8112)59-10-37  
Пермь (342)205-81-47

Ростов-на-Дону (863)308-18-15  
Рязань (4912)46-61-64  
Самара (846)206-03-16  
Санкт-Петербург (812)309-46-40  
Саратов (845)249-38-78  
Севастополь (8692)22-31-93  
Саранск (8342)22-96-24  
Симферополь (3652)67-13-56  
Смоленск (4812)29-41-54  
Сочи (862)225-72-31  
Ставрополь (8652)20-65-13  
Сургут (3462)77-98-35  
Сыктывкар (8212)25-95-17  
Тамбов (4752)50-40-97  
Тверь (4822)63-31-35

Тольятти (8482)63-91-07  
Томск (3822)98-41-53  
Тула (4872)33-79-87  
Тюмень (3452)66-21-18  
Ульяновск (8422)24-23-59  
Улан-Удэ (3012)59-97-51  
Уфа (347)229-48-12  
Хабаровск (4212)92-98-04  
Чебоксары (8352)28-53-07  
Челябинск (351)202-03-61  
Череповец (8202)49-02-64  
Чита (3022)38-34-83  
Якутск (4112)23-90-97  
Ярославль (4852)69-52-93

Россия +7(495)268-04-70

Казахстан +7(727)345-47-04

Беларусь +375-257-127-884

Узбекистан +998(71)205-18-59

Киргизия +996(312)96-26-47

эл.почта: [mce@nt-rt.ru](mailto:mce@nt-rt.ru) || сайт: <https://cem.nt-rt.ru/>